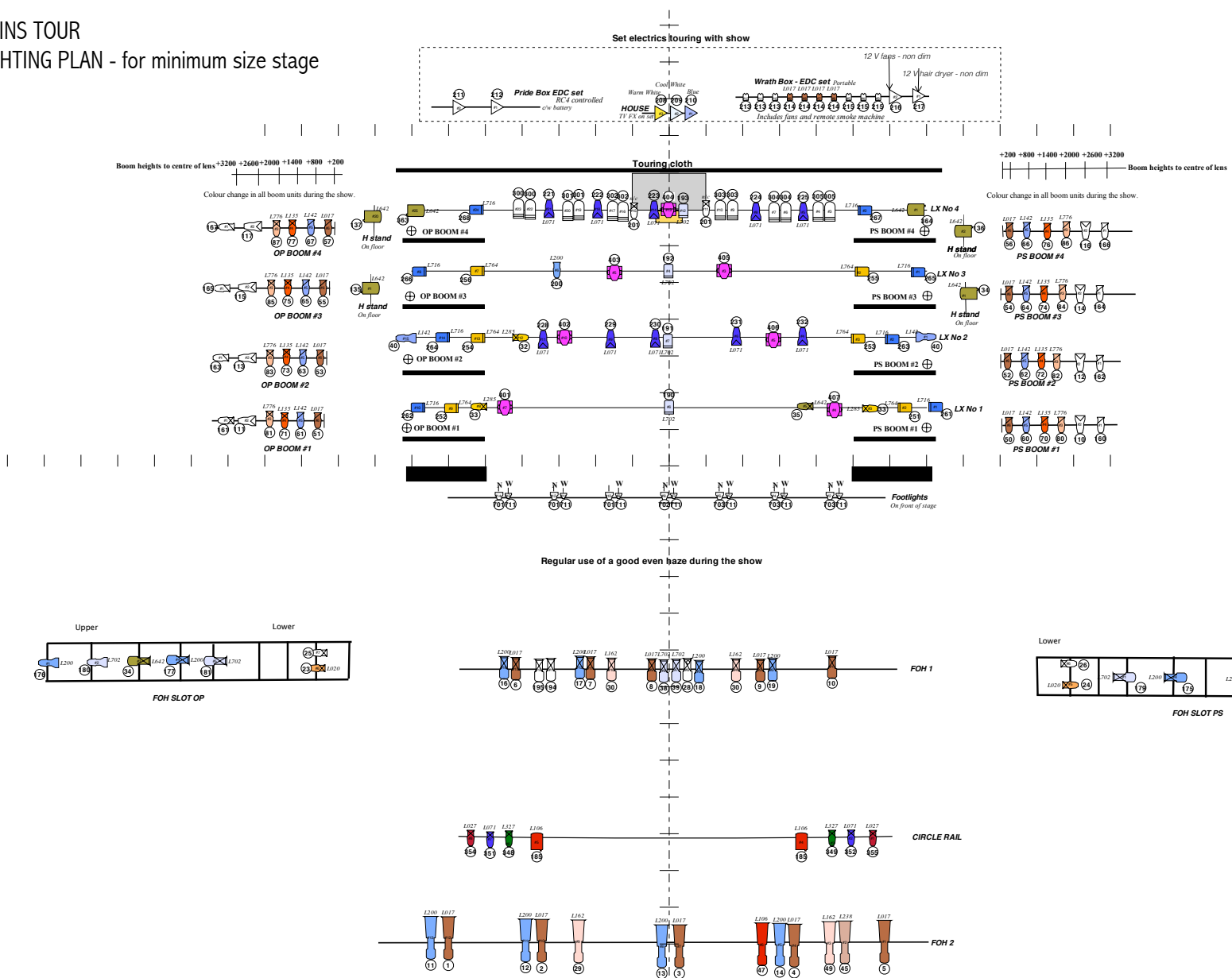


7 DEADLY SINS TOUR

SAMPLE LIGHTING PLAN - for minimum size stage



Key			
	Robe Pointe (7/7)		Pacific 5-13' (13)
	Philips PAR155 RGBW (18/18)		Pacific 12-28 (22)
	10° Source Four (6)		1.2K PC (9)
	19° Source Four (25)		1.2KW Fresnel (18)
	26° Source Four (31)		110V PAR VNSP (12)
	36° Source Four (3)		MR16 Birdie EXN 36° (7/7)
			60° 35W Birdie (10/10)
			LED prac (7)
			iris (1)
			boom position (8)

NOTES

*Instrumentation is indicative only and will depend on the size and infrastructure of each venue.

*Footlights mounted on front of stage so as to be safe for audience.

*Colour change in all boom units.

*Barndoors on all Fresnels and PC's

*Good even haze required during the show

*FOH Curtain warmers (Chan 185) can be house standard

Any queries please contact the designer:
+61 412 131 860
dwalters@pacific.net.au

SEVEN DEADLY SINS

EXPRESSIONS TOUR GENERIC
SMALL VENUE

LIGHTING PLAN Scale - 1:50 @ A0
14/2/17 Version 1

CHOREOGRAPHED by Natalie Wier
DESIGNED by Bill Haycock
COMPOSED by Darrin Verhagen
LIGHTING DESIGN by David Walters

Drawn by D Walters © 2017